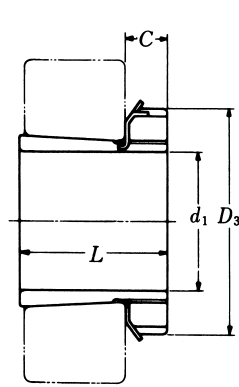
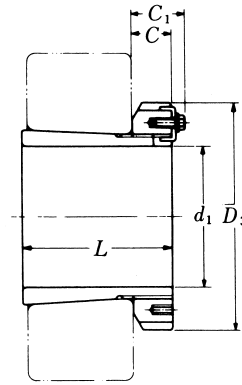


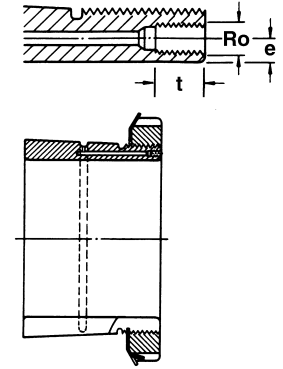
# Hydraulic Adapter Sleeves



$d_1 \leq 180 \text{ mm}$



$d_1 \geq 200 \text{ mm}$



TAPER 1:12

## HOH 39

Hydraulic Adapter <sup>1)</sup> Part No.	d <sub>1</sub> H mm	L mm	D <sub>3</sub> mm	C mm	C <sub>1</sub> <sup>2)</sup> mm	R <sub>o</sub>	e mm	t mm	Lock Nut	Lock Washer and Lock plate	Weight (kgs)
HOH 3936	160	87	210	30	—	M6	4.2	8	ANL 36	AWL 36	5.700
HOH 3938	170	89	220	31	—	M6	4.2	8	ANL 38	AWL 38	6.190
HOH 3940	180	98	240	32	—	M6	4.2	8	ANL 40	AWL 40	7.890
HOH 3944	200	96	260	30	41	M6	4.2	8	ANL 44	ALL 44	8.160
HOH 3948	220	101	290	34	46	M6	4.2	8	ANL 48	ALL 48	10.700
HOH 3952	240	116	310	34	46	M6	4.2	8	ANL 52	ALL 52	12.800
HOH 3956	260	121	330	38	50	M6	4.2	8	ANL 56	ALL 56	14.800
HOH 3960	280	140	360	42	54	M6	4.2	8	ANL 60	ALL 60	19.800
HOH 3964	300	140	380	42	55	M6	3.5	8	ANL 64	ALL 64	21.000
HOH 3968	320	144	400	45	58	M6	3.5	8	ANL 68	ALL 68	23.500
HOH 3972	340	144	420	45	58	M6	3.5	8	ANL 72	ALL 72	24.500
HOH 3976	360	164	450	48	62	M6	3.5	8	ANL 76	ALL 76	31.500
HOH 3980	380	168	470	52	66	M6	3.5	8	ANL 80	ALL 80	35.000
HOH 3984	400	168	490	52	66	M6	3.5	8	ANL 84	ALL 84	36.600
HOH 3988	410	189	520	60	77	M8	6.5	12	ANL 88	ALL 88	57.300
HOH 3992	430	189	540	60	77	M8	6.5	12	ANL 92	ALL 92	59.900
HOH 3996	450	200	560	60	77	M8	6.5	12	ANL 96	ALL 96	64.900
HOH 39/500	470	208	580	68	85	M8	6.5	12	ANL 100	ALL 100	73.100

Note :

- 1) Hydraulic adapter sleeves are supplied complete with lock nuts and lock washers or lock plates °  
整組油壓緊定套附螺母及華司或鎖定片。
- 2) Adapter with the dimension C1 have a locking device as shown in the right illustration °  
標示出 C1 尺寸的套筒附鎖定裝置, 如右圖所示。