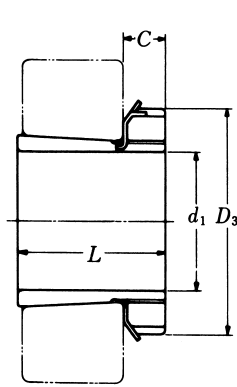
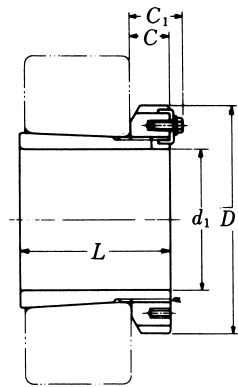


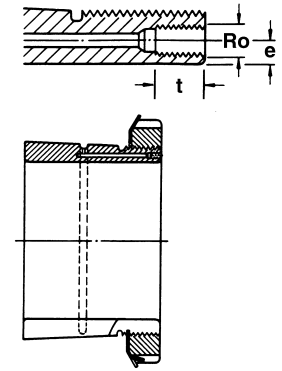
Hydraulic Adapter Sleeves



$d_1 \leq 260 \text{ mm}$



$d_1 \geq 280 \text{ mm}$



TAPER 1:12

HOH 23

Hydraulic Adapter ¹⁾ Part No.	d ₁ H mm	L mm	D ₃ mm	C mm	C ₁ ²⁾ mm	R _o	e mm	t mm	Lock Nut	Lock Washer and Lock plate	Weight (kgs)
HOH 2332	140	147	210	28	—	M6	4.2	8	AN 32	AW 32	9.140
HOH 2334	150	154	220	29	—	M6	4.2	8	AN 34	AW 34	10.200
HOH 2336	160	161	230	30	—	M6	4.2	8	AN 36	AW 36	11.300
HOH 2338	170	169	240	31	—	M6	4.2	8	AN 38	AW 38	12.600
HOH 2340	180	176	250	32	—	M6	4.2	8	AN 40	AW 40	13.900
HOH 2344	200	186	280	35	—	M6	4.2	8	HN 44	AW 44	17.700
HOH 2348	220	199	300	37	—	M6	4.2	8	HN 48	AW 48	20.700
HOH 2352	240	211	330	38	—	M6	4.2	8	HN 52	AW 52	25.400
HOH 2356	260	224	350	39	—	M6	4.2	8	HN 56	AW 56	29.100

HOH 32

TAPER 1:12

Hydraulic Adapter ¹⁾ Part No.	d ₁ H mm	L mm	D ₃ mm	C mm	C ₁ ²⁾ mm	R _o	e mm	t mm	Lock Nut	Lock Plate	Weight (kgs)
HOH 3260	280	240	380	40	53	M6	4.2	8	AN 60	AL 60	34.100
HOH 3264	300	258	400	42	56	M6	3.5	8	AN 64	AL 64	39.300
HOH 3268	320	288	440	55	72	M6	3.5	8	AN 68	AL 68	54.600
HOH 3272	340	299	460	58	75	M6	3.5	8	AN 72	AL 72	60.200
HOH 3276	360	310	490	60	77	M6	3.5	8	AN 76	AL 76	69.600
HOH 3280	380	328	520	62	82	M6	3.5	8	AN 80	AL 80	81.000
HOH 3284	400	352	540	70	90	M6	3.5	8	AN 84	AL 84	94.000
HOH 3288	410	361	560	70	90	M8	6.5	12	AN 88	AL 88	118.000
HOH 3292	430	382	580	75	95	M8	6.5	12	AN 92	AL 92	132.000
HOH 3296	450	397	620	75	95	M8	6.5	12	AN 96	AL 96	152.000
HOH 32/500	470	428	630	80	100	M8	6.5	12	AN 100	AL 100	166.000

Note :

- 1) Hydraulic adapter sleeves are supplied complete with lock nuts and lock washers or lock plates °
整組油壓緊定套附螺母及華司或鎖定片。
- 2) Adapter with the dimension C1 have a locking device as shown in the right illustration °
標示出 C1 尺寸的套筒附鎖定裝置, 如右圖所示。