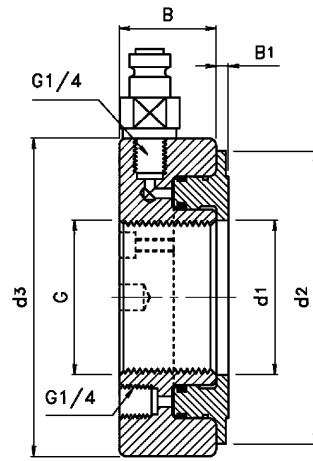
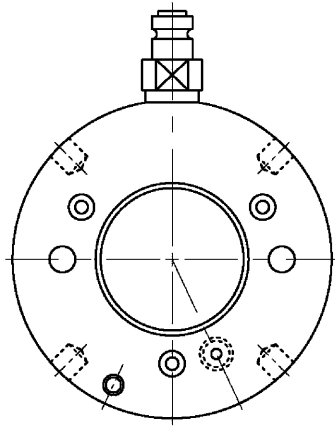


Hydraulic Nuts

GPV



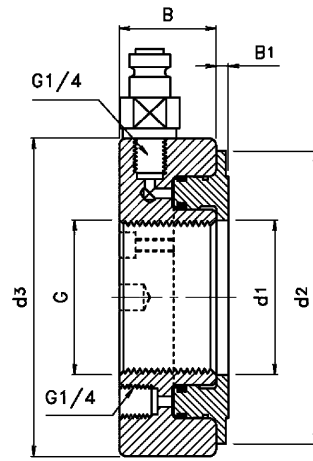
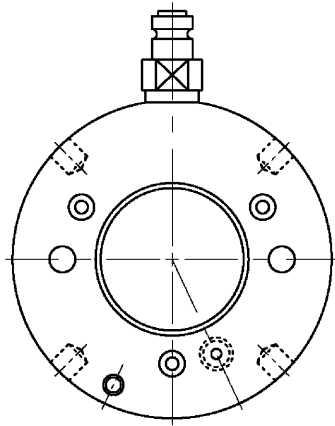
Designation	G thread	d1 mm	d2 mm	d3 mm	B mm	B1 mm	Permitted Piston dis- Placement mm	Piston Area mm ²	Weight (kgs)
GPV 10E	M 50 × 1.5	50.5	104	114	38	4	5	2900	2.70
GPV 11E	M 55 × 2	55.5	109	120	38	4	5	3150	2.75
GPV 12E	M 60 × 2	60.5	115	125	38	5	5	3300	2.80
GPV 13E	M 65 × 2	65.5	121	130	38	5	5	3600	3.00
GPV 14E	M 70 × 2	70.5	127	135	38	5	5	3800	3.20
GPV 15E	M 75 × 2	75.5	132	140	38	5	5	4000	3.40
GPV 16E	M 80 × 2	80.5	137	146	38	5	5	4200	3.70
GPV 17E	M 85 × 2	85.5	142	150	38	5	5	4400	3.75
GPV 18E	M 90 × 2	90.5	147	156	38	5	5	4700	4.00
GPV 19E	M 95 × 2	95.5	153	162	38	5	5	4900	4.30
GPV 20E	M 100 × 2	100.5	158	166	38	6	5	5100	4.40
GPV 21E	M 105 × 2	105.5	163	172	38	6	5	5300	4.65
GPV 22E	M 110 × 2	110.5	169	178	38	6	5	5600	4.95
GPV 23E	M 115 × 2	115.5	174	182	38	6	5	5800	5.00
GPV 24E	M 120 × 2	120.5	179	188	38	6	5	6000	5.25
GPV 25E	M 125 × 2	125.5	184	192	38	6	5	6200	5.35
GPV 26E	M 130 × 2	130.5	190	198	38	6	5	6400	5.65
GPV 27E	M 135 × 2	135.5	195	204	38	6	5	6600	5.90
GPV 28E	M 140 × 2	140.5	200	208	38	7	5	6800	6.00
GPV 29E	M 145 × 2	145.5	206	214	39	7	5	7300	6.50
GPV 30E	M 150 × 2	150.5	211	220	39	7	5	7500	6.60
GPV 31E	M 155 × 3	155.5	218	226	39	7	5	8100	6.95
GPV 32E	M 160 × 3	160.5	224	232	40	7	6	8600	7.60
GPV 33E	M 165 × 3	165.5	229	238	40	7	6	8900	7.90
GPV 34E	M 170 × 3	170.5	235	244	41	7	6	9400	8.40
GPV 36E	M 180 × 3	180.5	247	256	41	7	6	10300	9.15
GPV 38E	M 190 × 3	191	259	270	42	8	7	11500	10.50

Note :

- 1) M means metric thread and the digits are major diameter of thread and pitch。
M 代表公制式螺紋；數字代表螺紋外徑及螺距。

Hydraulic Nuts

GPV

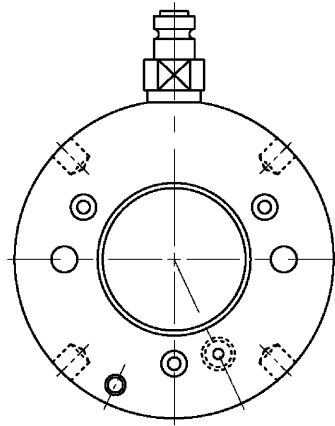


Designation	G thread	d1 mm	d2 mm	d3 mm	B mm	B1 mm	Permitted Piston dis- Placement mm	Piston Area mm ²	Weight (kgs)
GPV 40E	M 200 × 3	201	271	282	43	8	8	12500	11.5
GPV 41E	Tr 205 × 4	207	276	288	43	8	8	12800	12.0
GPV 42E	Tr 210 × 4	212	282	294	44	8	9	13400	12.5
GPV 43E	Tr 215 × 4	217	287	300	44	8	9	13700	13.0
GPV 44E	Tr 220 × 4	222	293	306	44	8	9	14400	13.5
GPV 45E	Tr 225 × 4	227	300	312	45	8	9	15200	14.5
GPV 46E	Tr 230 × 4	232	305	318	45	8	9	15500	15.0
GPV 47E	Tr 235 × 4	237	311	326	46	8	10	16200	16.0
GPV 48E	Tr 240 × 4	242	316	330	46	9	10	16500	16.5
GPV 50E	Tr 250 × 4	252	329	342	46	9	10	17600	17.5
GPV 52E	Tr 260 × 4	262	341	356	47	9	11	18800	19.5
GPV 54E	Tr 270 × 4	272	352	368	48	9	12	19800	20.5
GPV 56E	Tr 280 × 4	282	363	380	49	9	12	21100	22.0
GPV 58E	Tr 290 × 4	292	375	390	49	9	13	22400	22.5
GPV 60E	Tr 300 × 4	302	386	404	51	10	14	23600	25.5
GPV 62E	Tr 310 × 5	312	397	416	52	10	14	24900	27.0
GPV 64E	Tr 320 × 5	322	409	428	53	10	14	26300	29.5
GPV 66E	Tr 330 × 5	332	419	438	53	10	14	27000	30.0
GPV 68E	Tr 340 × 5	342	430	450	54	10	14	28400	31.5
GPV 69E	Tr 345 × 5	347	436	456	54	10	14	29400	32.5
GPV 70E	Tr 350 × 5	352	442	464	56	10	14	29900	35.0
GPV 72E	Tr 360 × 5	362	455	472	56	10	15	31300	35.5
GPV 73E	Tr 365 × 5	367	460	482	57	11	15	31700	38.5
GPV 74E	Tr 370 × 5	372	466	486	57	11	16	32800	39.0
GPV 76E	Tr 380 × 5	382	476	498	58	11	16	33500	40.5
GPV 77E	Tr 385 × 5	387	483	504	58	11	16	34700	41.0
GPV 80E	Tr 400 × 5	402	499	522	60	11	17	36700	45.5

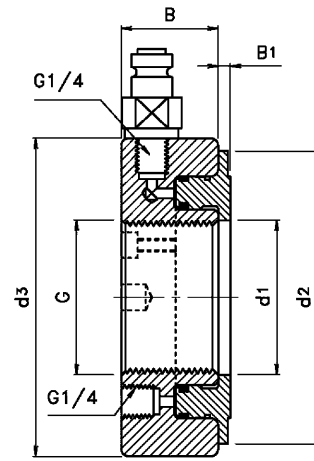
Note :

- 1) M means metric thread and the digits are major diameter of thread and pitch。
M 代表公制式螺紋；數字代表螺紋外徑及螺距。
- 2) Tr means 30° trapezoid thread and the digits are major diameter of thread and pitch。
Tr 代表 30° 梯形螺紋；數字代表螺紋外徑及螺距。

Hydraulic Nuts



GPV



Designation	G thread	d1 mm	d2 mm	d3 mm	B mm	B1 mm	Permitted Piston dis- Placement mm	Piston Area mm ²	Weight (kgs)
GPV 82E	Tr 410 × 5	412	510	534	61	11	17	38300	48.0
GPV 84E	Tr 420 × 5	422	522	546	61	11	17	40000	50.0
GPV 86E	Tr 430 × 5	432	532	556	62	11	17	40800	52.5
GPV 88E	Tr 440 × 5	442	543	566	62	12	17	42500	54.0
GPV 90E	Tr 450 × 5	452	554	580	64	12	17	44100	57.5
GPV 92E	Tr 460 × 5	462	565	590	64	12	17	45100	60.0
GPV 94E	Tr 470 × 5	472	576	602	65	12	18	46900	62.0
GPV 96E	Tr 480 × 5	482	587	612	65	12	19	48600	63.0
GPV 98E	Tr 490 × 5	492	597	624	66	12	19	49500	66.0

Note :

- 1) Tr means 30°, trapezoid thread and the digits are major diameter of thread and pitch。
Tr 代表 30°，梯形螺紋；數字代表螺紋外徑及螺距。