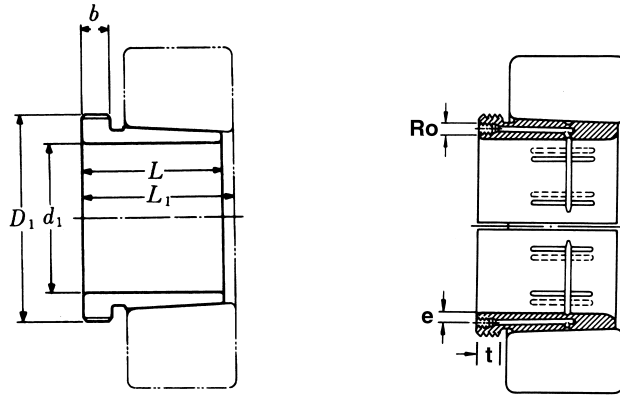


Hydraulic Withdrawal Sleeves



AOH 39

TAPER 1:12

Hydraulic Withdrawal Part No.	d ₁ mm	L mm	L ₁ ¹⁾ mm	b mm	R _o	e mm	t mm	Thread ²⁾ D ₁ mm	Appropriate Withdrawal Nut No.	Weight (kgs)
AOH 3944	200	77	83	16	M8	7.5	12	Tr 230 × 4	HN 46	4.830
AOH 3948	220	77	83	16	M8	7.5	12	Tr 250 × 4	HN 50	5.290
AOH 3952	240	94	100	18	M8	7.5	12	Tr 270 × 4	HN 54	7.060
AOH 3956	260	94	100	18	M8	7.5	12	Tr 290 × 4	HN 58	7.070
AOH 3960	280	112	119	21	M8	7.5	12	Tr 310 × 5	HN 62	10.100
AOH 3964	300	112	119	21	M8	7.5	12	Tr 330 × 5	HN 66	10.800
AOH 3968	320	112	119	21	M8	7.5	12	Tr 360 × 5	HNL 72	12.400
AOH 3972	340	112	119	21	M8	7.5	12	Tr 380 × 5	HNL 76	13.100
AOH 3976	360	130	138	22	M8	7.5	12	Tr 400 × 5	HNL 80	15.900
AOH 3980	380	130	138	22	M8	7.5	12	Tr 420 × 5	HNL 84	17.200
AOH 3984	400	130	138	22	M8	7.5	12	Tr 440 × 5	HNL 88	18.100
AOH 3988	420	145	153	25	G 1/8	8.5	12	Tr 460 × 5	HNL 92	21.500
AOH 3992	440	145	153	25	G 1/8	8.5	12	Tr 480 × 5	HNL 96	22.500
AOH 3996	460	158	167	28	G 1/8	8.5	12	Tr 500 × 5	HNL 100	26.000
AOH 39/500	480	162	172	32	G 1/8	8.5	12	Tr 520 × 6	HNL 104	27.700

Note :

- 1) Dimension L₁ decreases as the Hydraulic withdrawal sleeve is driven in during mouting 。
L₁尺寸隨油壓退卸套鎖緊而變小。
- 2) M means metric thread , Tr means 30° , trapezoid thread and the digits are outside diameter of thread and pitch 。
M 代表公制螺紋 , Tr 代表 30° , 梯形螺紋 ; 數字代表螺紋外徑及螺距。