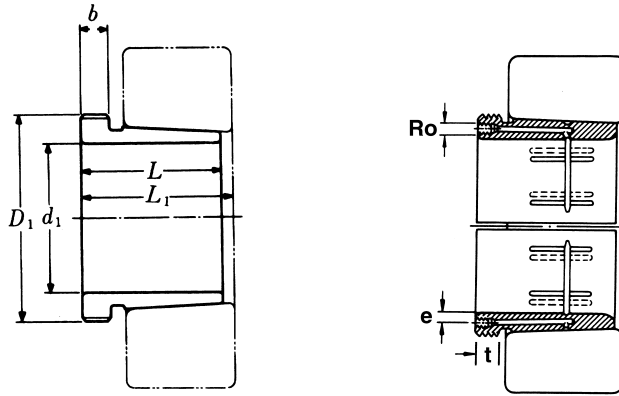


Hydraulic Withdrawal Sleeves



AOH 31

TAPER 1:12

Hydraulic Withdrawal Part No.	d ₁ mm	L mm	L ₁ ¹⁾ mm	b mm	R _o	e mm	t mm	Thread ²⁾ D ₁ mm	Appropriate Withdrawal Nut No.	Weight (kgs)
AOH 3132	150	103	108	16	M6	4.5	8	M 180 × 3	AN 36	3.210
AOH 3134	160	104	109	16	M6	4.5	8	M 190 × 3	AN 38	3.400
AOH 3136	170	116	122	19	M6	4.5	8	M 200 × 3	AN 40	4.220
AOH 3138	180	125	131	20	M6	4.5	8	Tr 210 × 4	HN 42	4.890
AOH 3140	190	134	140	21	M6	4.5	8	Tr 220 × 4	HN 44	5.490
AOH 3144	200	145	151	23	G $\frac{1}{8}$	8.5	12	Tr 240 × 4	HN 48	10.400
AOH 3148	220	154	161	25	G $\frac{1}{8}$	8.5	12	Tr 260 × 4	HN 52	12.000
AOH 3152	240	172	179	26	G $\frac{1}{8}$	8.5	12	Tr 290 × 4	HN 58	16.200
AOH 3156	260	175	183	28	G $\frac{1}{8}$	8.5	12	Tr 310 × 5	HN 62	17.500
AOH 3160	280	192	200	30	G $\frac{1}{8}$	8.5	12	Tr 330 × 5	HN 66	20.800
AOH 3164	300	209	217	31	G $\frac{1}{8}$	8.5	12	Tr 350 × 5	HN 70	24.500
AOH 3168	320	225	234	33	G $\frac{1}{8}$	8.5	12	Tr 370 × 5	HN 74	29.000
AOH 3172	340	229	238	35	G $\frac{1}{8}$	8.5	12	Tr 400 × 5	HN 80	33.000
AOH 3176	360	232	242	36	G $\frac{1}{8}$	8.5	12	Tr 420 × 5	HN 84	35.700
AOH 3180	380	240	250	38	G $\frac{1}{8}$	8.5	12	Tr 440 × 5	HN 88	39.500
AOH 3184	400	266	276	40	G $\frac{1}{8}$	8.5	12	Tr 460 × 5	HN 92	46.500
AOH 3188	420	270	281	42	G $\frac{1}{8}$	8.5	12	Tr 480 × 5	HN 96	49.800
AOH 3192	440	285	296	43	G $\frac{1}{8}$	8.5	12	Tr 510 × 6	HN 102	57.900
AOH 3196	460	295	307	45	G $\frac{1}{8}$	8.5	12	Tr 530 × 6	HN 106	63.100
AOH 31/500	480	313	325	47	G $\frac{1}{8}$	8.5	12	Tr 550 × 6	HN 110	70.900

Note :

1) Dimension L₁ decreases as the Hydraulic withdrawal sleeve is driven in during mouting °

L₁尺寸隨油壓退卸套鎖緊而變小。

2) M means metric thread , Tr means 30°, trapezoid thread and the digits are outside diameter of thread and pitch °

M 代表公制螺紋，Tr 代表 30°，梯形螺紋；數字代表螺紋外徑及螺距。