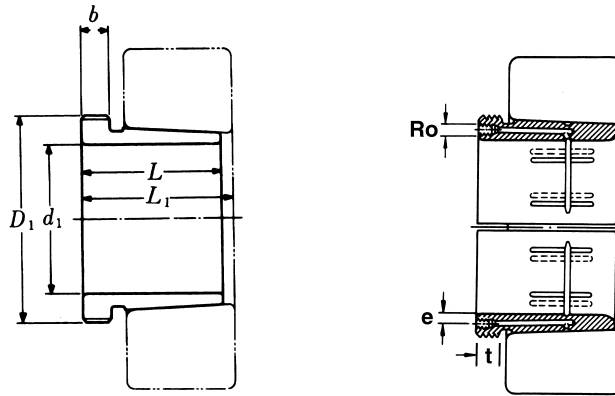


Hydraulic Withdrawal Sleeves



AOH 241

TAPER 1:30

Hydraulic Withdrawal Part No.	d ₁ mm	L mm	L ₁ ¹⁾ mm	b mm	R _o	e mm	t mm	Thread ²⁾ D ₁ mm	Appropriate Withdrawal Nut No.	Weight (kgs)
AOH 24144	200	170	184	20	M6	8	8	Tr 230 × 4	HN 46	10.200
AOH 24148	220	180	195	20	G 1/8	8.5	12	Tr 260 × 4	HN 52	12.500
AOH 24152	240	202	218	22	G 1/8	8.5	12	Tr 280 × 4	HN 56	15.400
AOH 24156	260	202	219	22	G 1/8	8.5	12	Tr 300 × 4	HN 60	16.300
AOH 24160	280	224	242	24	G 1/8	8.5	12	Tr 320 × 5	HN 64	19.500
AOH 24164	300	242	260	24	G 1/8	8.5	12	Tr 340 × 5	HN 68	21.400
AOH 24168	320	269	288	26	G 1/8	8.5	12	Tr 360 × 5	HN 72	27.100
AOH 24172	340	269	289	26	G 1/8	8.5	12	Tr 380 × 5	HN 76	29.600
AOH 24176	360	271	291	28	G 1/8	8.5	12	Tr 400 × 5	HN 80	31.300
AOH 24180	380	278	298	28	G 1/8	8.5	12	Tr 420 × 5	HN 84	34.400
AOH 24184	400	310	332	30	G 1/8	8.5	12	Tr 440 × 5	HN 88	40.300
AOH 24188	420	310	332	30	G 1/8	8.5	12	Tr 460 × 5	HN 92	42.300
AOH 24192	440	332	355	32	G 1/8	8.5	12	Tr 480 × 5	HN 96	47.600
AOH 24196	460	343	368	35	G 1/8	8.5	12	Tr 500 × 5	HN 100	52.700
AOH 241/500	480	362	387	37	G 1/8	8.5	12	Tr 520 × 6	HN 104	58.800

Note :

- 1) Dimension L₁ decreases as the Hydraulic withdrawal sleeve is driven in during mouting 。
L₁尺寸隨油壓退卸套鎖緊而變小。
- 2) M means metric thread , Tr means 30°, trapezoid thread and the digits are outside diameter of thread and pitch 。
M 代表公制螺紋， Tr 代表 30°， 梯形螺紋； 數字代表螺紋外徑及螺距。