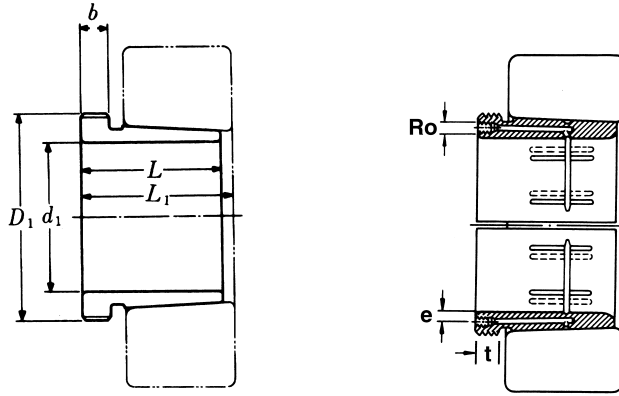


Hydraulic Withdrawal Sleeves



AOH 240

TAPER 1:30

Hydraulic Withdrawal Part No.	d ₁ mm	L mm	L ₁ ¹⁾ mm	b mm	R _o	e mm	t mm	Thread ²⁾ D ₁ mm	Appropriate Withdrawal Nut No.	Weight (kgs)
AOH 24044	200	138	152	18	M6	8	8	Tr 230 × 4	HN 46	8.250
AOH 24048	220	138	153	20	M6	8	8	Tr 250 × 4	HN 50	9.000
AOH 24052	240	162	178	20	M6	8	8	Tr 270 × 4	HN 54	11.800
AOH 24056	260	162	179	22	M6	8	8	Tr 290 × 4	HN 58	12.800
AOH 24060	280	184	202	24	M6	8	8	Tr 310 × 5	HN 62	15.500
AOH 24064	300	184	202	24	M6	8	8	Tr 330 × 5	HN 66	16.600
AOH 24068	320	206	225	26	G 1/8	8.5	12	Tr 360 × 5	HNL 72	21.700
AOH 24072	340	206	226	26	G 1/8	8.5	12	Tr 380 × 5	HNL 76	22.700
AOH 24076	360	208	228	28	G 1/8	8.5	12	Tr 400 × 5	HNL 80	23.700
AOH 24080	380	228	248	28	G 1/8	8.5	12	Tr 420 × 5	HNL 84	27.100
AOH 24084	400	230	252	30	G 1/8	8.5	12	Tr 440 × 5	HNL 88	29.000
AOH 24088	420	242	264	30	G 1/8	8.5	12	Tr 460 × 5	HNL 92	31.900
AOH 24092	440	250	273	32	G 1/8	8.5	12	Tr 480 × 5	HNL 96	34.700
AOH 24096	460	250	273	32	G 1/8	8.5	12	Tr 500 × 5	HNL 100	36.600
AOH 240/500	480	253	276	35	G 1/8	8.5	12	Tr 520 × 6	HNL 104	39.500

Note :

1) Dimension L1 decreases as the Hydraulic withdrawal sleeve is driven in during mouting °

L1尺寸隨油壓退卸套鎖緊而變小。

2) M means metric thread , Tr means 30°, trapezoid thread and the digits are outside diameter of thread and pitch °

M代表公制螺紋，Tr代表30°，梯形螺紋；數字代表螺紋外徑及螺距。