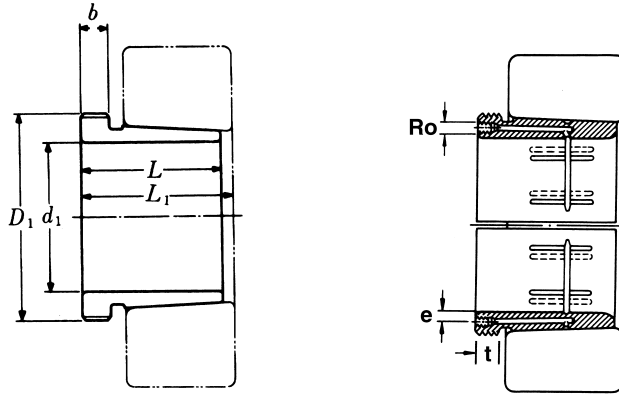


# Hydraulic Withdrawal Sleeves



## AOH 23

TAPER 1:12

Hydraulic Withdrawal Part No.	d <sub>1</sub> mm	L mm	L <sub>1</sub> <sup>1)</sup> mm	b mm	R <sub>o</sub>	e mm	t mm	Thread <sup>2)</sup> D <sub>1</sub> mm	Appropriate Withdrawal Nut No.	Weight (kgs)
AOH 2332	150	140	146	24	M6	4.5	8	M 180 × 3	AN 36	4.720
AOH 2334	160	146	152	24	M6	4.5	8	M 190 × 3	AN 38	5.250
AOH 2336	170	154	160	26	M6	4.5	8	M 200 × 3	AN 40	5.830
AOH 2338	180	160	167	26	M6	4.5	8	Tr 210 × 4	HN 42	6.630
AOH 2340	190	170	177	30	M6	4.5	8	Tr 220 × 4	HN 44	7.540
AOH 2344	200	181	189	30	G <sup>1/8</sup>	8.5	12	Tr 240 × 4	HN 48	13.500
AOH 2348	220	189	197	30	G <sup>1/8</sup>	8.5	12	Tr 260 × 4	HN 52	15.500
AOH 2352	240	205	213	30	G <sup>1/8</sup>	8.5	12	Tr 290 × 4	HN 58	19.600
AOH 2356	260	212	220	30	G	8.5	12	Tr 310 × 5	HN 62	21.600

Note :

1) Dimension L<sub>1</sub> decreases as the Hydraulic withdrawal sleeve is driven in during mouting °

L<sub>1</sub>尺寸隨油壓退卸套鎖緊而變小。

2) M means metric thread , Tr means 30°, trapezoid thread and the digits are outside diameter of thread and pitch °

M 代表公制螺紋， Tr 代表 30°， 梯形螺紋； 數字代表螺紋外徑及螺距。