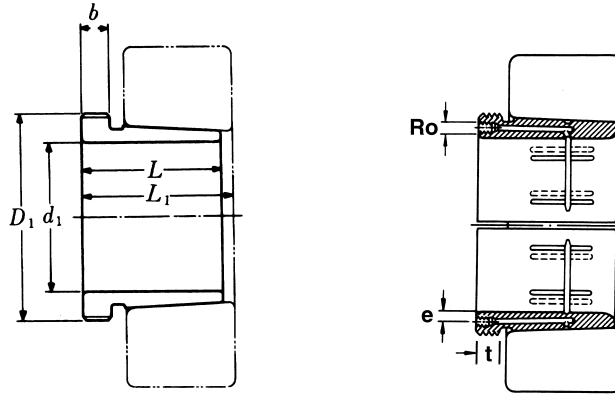


# Hydraulic Withdrawal Sleeves



## AOH 22

TAPER 1:12

Hydraulic Withdrawal Part No.	d <sub>1</sub> mm	L mm	L <sub>1</sub> <sup>1)</sup> mm	b mm	R <sub>o</sub>	e mm	t mm	Thread <sup>2)</sup> D <sub>1</sub> mm	Appropriate Withdrawal Nut No.	Weight (kgs)
AOH 2236	170	105	110	17	M6	4.5	8	M 200 × 3	AN 40	3.730
AOH 2238	180	112	117	18	M6	4.5	8	Tr 210 × 4	HN 42	4.250
AOH 2240	190	118	123	19	M6	4.5	8	Tr 220 × 4	HN 44	4.680
AOH 2244	200	130	136	20	G 1/8	8.5	12	Tr 240 × 4	HN 48	9.100
AOH 2248	220	144	150	21	G 1/8	8.5	12	Tr 260 × 4	HN 52	11.100
AOH 2252	240	155	161	23	G 1/8	8.5	12	Tr 290 × 4	HN 58	14.000
AOH 2256	260	155	163	24	G 1/8	8.5	12	Tr 310 × 4	HN 62	15.200
AOH 2260	280	170	178	26	G 1/8	8.5	12	Tr 330 × 4	HN 66	18.100
AOH 2264	300	180	190	27	G 1/8	8.5	12	Tr 350 × 4	HN 70	20.200

Note :

- 1) Dimension L<sub>1</sub> decreases as the Hydraulic withdrawal sleeve is driven in during mouting 。  
L<sub>1</sub>尺寸隨油壓退卸套鎖緊而變小。
- 2) M means metric thread , Tr means 30°, trapezoid thread and the digits are outside diameter of thread and pitch 。  
M 代表公制螺紋， Tr 代表 30°， 梯形螺紋； 數字代表螺紋外徑及螺距。