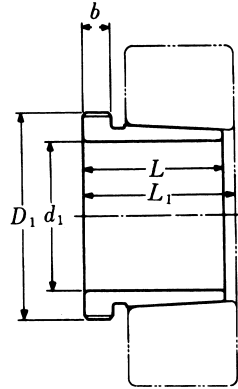


Withdrawal Sleeves



AH 30

TAPER 1:12

Withdrawal Part No.	d ₁ mm	L mm	L ₁ ¹⁾ mm	b mm	Thread ²⁾ D ₁ mm	Appropriate Withdrawal Nut No.	Weight (kgs)
AHX 3024	115	60	64	13	M 130 × 2	AN 26	0.750
AHX 3026	125	67	71	14	M 140 × 2	AN 28	0.930
AHX 3028	135	68	73	14	M 150 × 2	AN 30	1.010
AHX 3030	145	72	77	15	M 160 × 3	AN 32	1.150
AH 3032	150	77	82	16	M 170 × 3	AN 34	2.060
AH 3034	160	85	90	17	M 180 × 3	AN 36	2.430
AH 3036	170	92	98	17	M 190 × 3	AN 38	2.810
AH 3038	180	96	102	18	Tr 205 × 4	HNL 41	3.320
AH 3040	190	102	108	19	Tr 215 × 4	HNL 43	3.800
AH 3044	200	111	117	20	Tr 235 × 4	HNL 47	7.400
AH 3048	220	116	123	21	Tr 260 × 4	HNL 52	8.750
AH 3052	240	128	135	23	Tr 280 × 4	HNL 56	10.700
AH 3056	260	131	139	24	Tr 300 × 4	HNL 60	12.000
AH 3060	280	145	153	26	Tr 320 × 5	HNL 64	14.400
AH 3064	300	149	157	27	Tr 345 × 5	HNL 69	16.000
AH 3068	320	162	171	28	Tr 365 × 5	HNL 73	19.500
AH 3072	340	167	176	30	Tr 385 × 5	HNL 77	21.000
AH 3076	360	170	180	31	Tr 410 × 5	HNL 82	23.200
AH 3080	380	183	193	33	Tr 430 × 5	HNL 86	27.300
AH 3084	400	186	196	34	Tr 450 × 5	HNL 90	29.000
AHX 3088	420	194	205	35	Tr 470 × 5	HNL 94	32.000
AHX 3092	440	202	213	37	Tr 490 × 5	HNL 98	35.200
AHX 3096	460	205	217	38	Tr 520 × 6	HNL 104	39.200
AHX 30/500	480	209	221	40	Tr 540 × 6	HNL 108	42.500

Note :

1) Dimension L₁ decreases as the withdrawal sleeve is driven in during mouting °

L₁ 尺寸隨退卸套鎖緊而變小。

2) M means metric thread , Tr means 30°, trapezoid thread and the digits are outside diameter of thread and pitch °

M 代表公制螺紋，Tr 代表 30°，梯形螺紋；數字代表螺紋外徑及螺距。