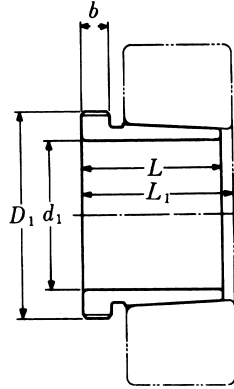


Withdrawal Sleeves



AH 241

TAPER 1:30

Withdrawal Part No.	d ₁ mm	L mm	L ₁ ¹⁾ mm	b mm	Thread ²⁾ D ₁ mm	Appropriate Withdrawal Nut No.	Weight (kgs)
AH 24122	105	82	91	13	M 115 × 2	AN 23	0.730
AH 24124	115	93	102	13	M 130 × 2	AN 26	1.000
AH 24126	125	94	104	14	M 140 × 2	AN 28	1.110
AH 24128	135	99	109	14	M 150 × 2	AN 30	1.250
AH 24130	145	115	126	15	M 160 × 3	AN 32	1.560
AH 24132	150	124	135	15	M 170 × 3	AN 34	3.000
AH 24134	160	125	136	16	M 180 × 3	AN 36	3.210
AH 24136	170	134	145	16	M 190 × 3	AN 38	3.680
AH 24138	180	146	159	18	M 200 × 3	AN 40	4.280
AH 24140	190	158	171	18	Tr 210 × 4	HN 42	5.100
AH 24144	200	170	184	20	Tr 230 × 4	HN 46	10.200
AH 24148	220	180	195	20	Tr 260 × 4	HN 52	12.500
AH 24152	240	202	218	22	Tr 280 × 4	HN 56	15.400
AH 24156	260	202	219	22	Tr 300 × 4	HN 60	16.300
AH 24160	280	224	242	24	Tr 320 × 5	HN 64	19.500
AH 24164	300	242	260	24	Tr 340 × 5	HN 68	21.400
AH 24168	320	269	288	26	Tr 360 × 5	HN 72	27.100
AH 24172	340	269	289	26	Tr 380 × 5	HN 76	29.600
AH 24176	360	271	291	28	Tr 400 × 5	HN 80	31.300
AH 24180	380	278	298	28	Tr 420 × 5	HN 84	34.400
AH 24184	400	310	332	30	Tr 440 × 5	HN 88	40.300
AH 24188	420	310	332	30	Tr 460 × 5	HN 92	42.300
AH 24192	440	332	355	32	Tr 480 × 5	HN 96	47.600
AH 24196	460	343	368	35	Tr 500 × 5	HN 100	52.700
AH 241/500	480	362	387	37	Tr 520 × 6	HN 104	58.800

Note :

- 1) Dimension L₁ decreases as the withdrawal sleeve is driven in during mouting 。
L₁尺寸隨退卸套鎖緊而變小。
- 2) M means metric thread Tr means 30° trapezoid thread and the digits are outside diameter of thread and pitch 。
M 代表公制螺紋,Tr 代表 30° 梯形螺紋；數字代表螺紋外徑及螺距。